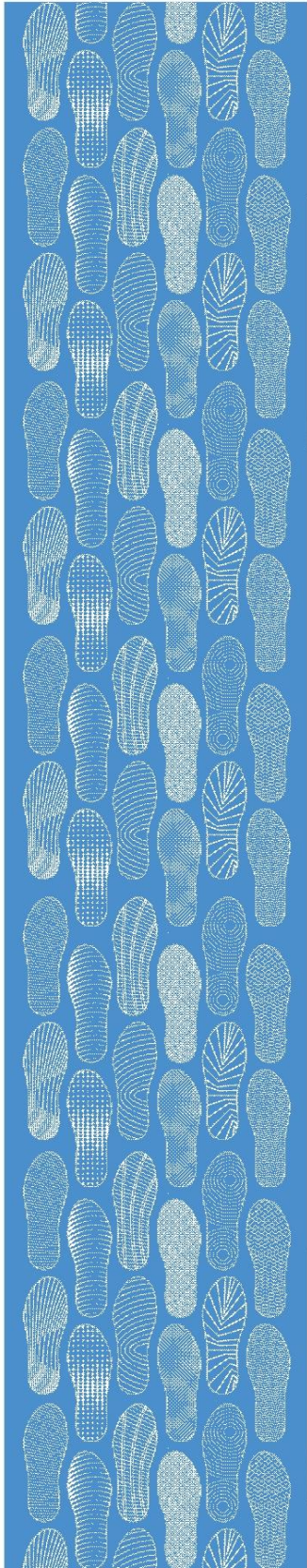




Right Step Towards Excellence

 **TECHNOCRAT**
PRECISION MOULDING MACHINES



About us:

Technocrat Mouldings Pvt Ltd is a renowned name in the field of Machinery Manufacturing, we are a New Delhi based organization manufacturing world class machines for over 2 decades. Driven with a vision to provide the best in the area of footwear machinery and by combining engineering excellence, the company has carved a niche as one of the most noted manufacturers in its arena. We have been making world class unit sole moulding machines to process TPR, PVC & TPU material. We manufacture extrusion type as well as screw piston injection type machines. We at Technocrat Mouldings believe that, growth of the company depends on the faith and belief of our customers in our products and services, which has helped us in building a unique repeat order customer base. By means of advanced technology, the most outstanding products and our passion for quality, we deliver high performance solutions to meet your individual needs. We invite you to trust in Technocrat and invest in quality.



Double Colour Sole Moulding Machine TM-100



Static type machine for production of two-colour soles and straps from PVC and TPR.

- Equipped with Power Saving Frequency Drive
- Wastage of material less in comparison to conventional rotary machines.
- Colour and size management easy.
- Power consumption very less.
- Single operator required, significantly saves manpower as compared to rotary type machines.
- Aluminium moulds can be used.
- Can be used as single colour.
- Less wear and tear.
- Ejector.
- Safety Shutter.



Equipped with Power Saving Frequency Drive.

Specification	Units	Techdual 1	Techdual 2
Screw Dia 1st colour	MM	65 mm	65 mm
Screw Dia 2nd colour	MM	65mm	65mm
Screw Speed	RPM	100-250	100-250
Heating Load	KW	6.4	12.8
Electrical Motor	KW	26.11	52.2
Total Connected Load	KW	32.51	65.02
Clamping Force	Ton	100	100
Production Capacity	Pair / Hour	20-70	40-140
Standard Mould Size	MM	300x400	300x400
Net Weight	KG	3800	6800
Machine Dimensions (WxLxH)	MM	1000x3050x2800	2000x3050x2800
Ejector Force	Ton	0.5	0.5
Oil Capacity	LTR	210	350



TPR, PVC Sole Moulding Machine: TECHRO-DLX

Machines to manufacture Welt, Insert & Veneer type soles.

- PLC controlled.
- Three speed gear box.
- Heavy clamping.
- This machine is equipped with sliding and rotational plates which provide easier access for insertion of welt, insert or veneer in the moulds.
- Safety shutter.
- Ejector system.



Also available with
Power Saving Frequency Drive.

Specification	Units	Techro DLX 1	Techro DLX 2
Screw Diameter	MM	65	65
Screw Speed	RPM	170/220/250	170/220/250
Heating Load	KW	3.2	6.4
Electrical Motors	KW	17	28
Total Connected Load	KW	20.2	34.4
Clamping Force	Ton	100	100
Production Capacity	Pair/Hr	30-120	60-220
Standard Mould Size	MM	300X400	300X400
Net Weight	Kgs	3000	6000
Machine Dimensions (WxLxH)	MM	1000x3000x2300	2000x3000x2300
Capacity of Oil Tank	Ltrs	250	350

Double Colour Sole Moulding Machine TECHDUAL-IN

- Suitable for thermoplastic raw material PVC/TPR/TPU.
- Fitted with proportional valves which enables to change flow and pressure from HMI
- Safety shutter, ejector mechanism.
- Can be used as single colour and double colour sole moulding machines.



Specification	Units	Techdual IN 1	Techdual IN 2
Volume	Cm3	800	800
Injection Pressure	Kg/Cm ²	500	500
Screw Speed (Rotation)	RPM	0-120	0-120
Heating Capacity Power	Kw	4x2 : 8	4x4 : 16
Heating Zone	No	2+1	2+1
Screw Diameter	Mm	60x2	60x4
Clamping Force	Ton	125	125
Minimum Mould Height	Mm	50	50
Opening Stroke	Mm	325	325
Mould Dimensions	Mm	300x400	300x400
Ejector Stroke	Mm	75	75
Ejector Force	Ton	1	1
Main Motor Electric Power	HP(Kw)	10/7.46	20 / 14.96
Production Pair	Hr	20 to 40	40 to 80
Oil Tank Capacity	Ltrs	350	630
PLC	PLC	SIEMENS	SIEMENS
Total Power	Kw	15	30
Dimensions (WxLxH)	MM	1000x3600x3000	2000x3600x3000
Net Weight	TON	5.5	10



TPR, PVC Sole Moulding Machine: **TECHNICA**

State-of-the-Art high production extrusion moulding machines to manufacture soles (with or without insert). Footwear components and other plastic items from PVC and various Thermolastic Elastomers (TPR).

- This machines uses extrusion injection system which delivers smooth and dent free unit soles.
- PID temperature controllers with auto tuning facility used for barrel temperature settings providing faster response to temperature fluctuations which improve the product quality.
- This machine is easy to operate, quite economical and saves electricity consumption, manpower & space by upto 50% than conventional horizontal and vertical machines.
- Bottom cylinder clamping system for uniform and heavy clamping.



Also available with Power Saving Frequency Drive.



**Over 700
Machines sold**

Specification	Units	Technica 1	Technica 2
Screw Diameter	MM	65	65
Screw Speed	RPM	220/3 Speed Gear Box	220/3 Speed Gear Box
Heating Load	KW	3.2	6.4
Electrical Motors	KW	17	28
Total Connected Load	KW	20.2	34.4
Clamping Force	Ton	50/70/100/125	50/70/100/125
Production Capacity	Pair/Hr	30-120	60-220
Standard Mould Size	MM	300X400	300X400
Net Weight	Kgs	1800	3700
Machine Dimensions (WxLxH)	MM	760x2750x 400	1524x2750 x2400
Capacity of Oil Tank	Ltrs	250	350



Welt Insert Machine TECHRO

Machines to manufacture Welt, Insert & Veneer type soles.

- This machine is equipped with sliding and rotational plates which provide easier access for insertion of welt, insert or veneer in the moulds.
- Compact and easily accessible layout.
- Sliding system ensures faster mounting of the moulds.



Specification	Units	Techro 1	Techro 2
Screw Diameter	MM	65	65
Screw Speed	RPM	220/3 Speed Gear Box	220/3 Speed Gear Box
Heating Load	KW	3.2	6.4
Electrical Motors	KW	17	28
Total Connected Load	KW	20.2	34.4
Clamping Force	Ton	50/70/100/125	50/70/100/125
Production Capacity	Pair/Hr	30-120	60-220
Standard Mould Size	MM	300X400	300X400
Net Weight	Kgs	1800	3700
Machine Dimensions (WxLxH)	MM	760x2800x2500	1524x2800x2500
Capacity of Oil Tank	Ltrs	250	350



Screw Piston Sole Moulding Machine TECHIN

Injection type machine to process TPR, PVC and TPU, uses injection system which delivers smooth and dent free unit soles.

- This machine is ideal for complex design soles.
- Low power usage.
- Nozzle shutter optional.
- Hopper dryer optional for TPU.



Specification	Units	Techin 1	Techin 2
Screw Dia 1st colour	MM	60	60
Screw Speed	RPM	0-100	0-100
Heating Load	KW	3.2	6.4
Electrical Motor	KW	7.46	14.92
Total Connected Load	KW	10.66	21.32
Clamping Force	Ton	100	100
Production Capacity	Pair/Hour	20-70	40-140
Standard Mould Size	MM	300x400	300x400
Net Weight	KG	3800	6800
Machine Dimensions	MM	765(W)x3350(L)x2800(H)1530	(W)x3350(L)x2800(H)
Oil Capacity	LTR	330	660



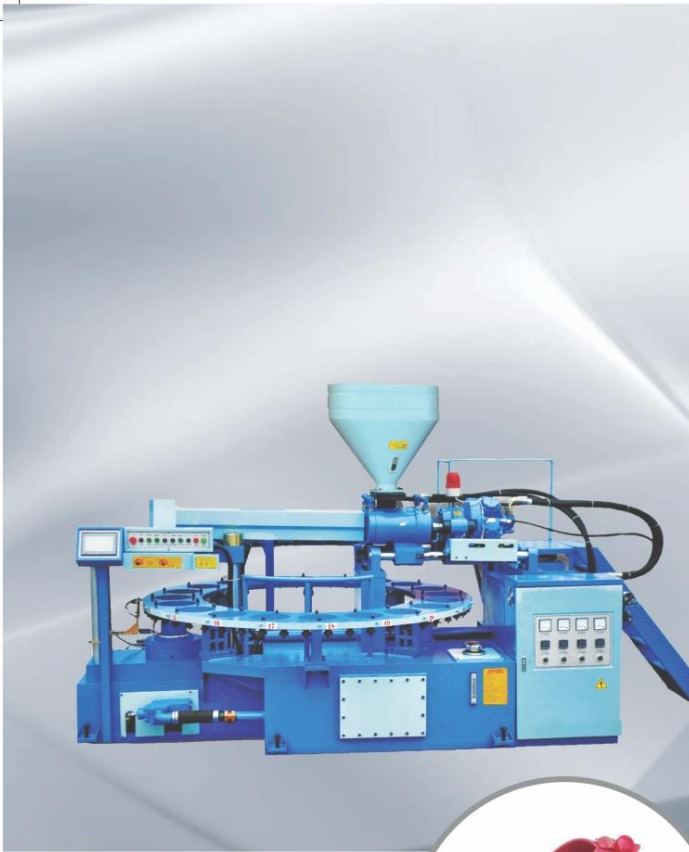
TPR, PVC Sole Moulding Machine: TECHNICA-SL

- This machine is ideal to manufacture unit soles with welt & insert type soles.
- This machines uses extrusion injection system which delivers smooth and dent free unit soles.
- The machine is equipped with bottom sliding plate which provide easier access to mould for application of welt or insert.
- Sliding system for faster mounting of moulds.



Specification	Units	Technica-SL 1	Technica-SL 2
Screw Diameter	MM	65	65
Screw Speed	RPM	220/3 Speed Gear Box	220/3 Speed Gear Box
Heating Load	KW	3.2	6.4
Electrical Motors	KW	17	28
Total Connected Load	KW	20.2	34.4
Clamping Force	Ton	50/70/100/125	50/70/100/125
Production Capacity	Pair/Hr	30-120	60-220
Standard Mould Size	MM	300X400	300X400
Net Weight	Kgs	1800	3700
Machine Dimensions (WxLxH)	MM	760x2800x2400	1524x2800x2400
Capacity of Oil Tank	Ltrs	250	350

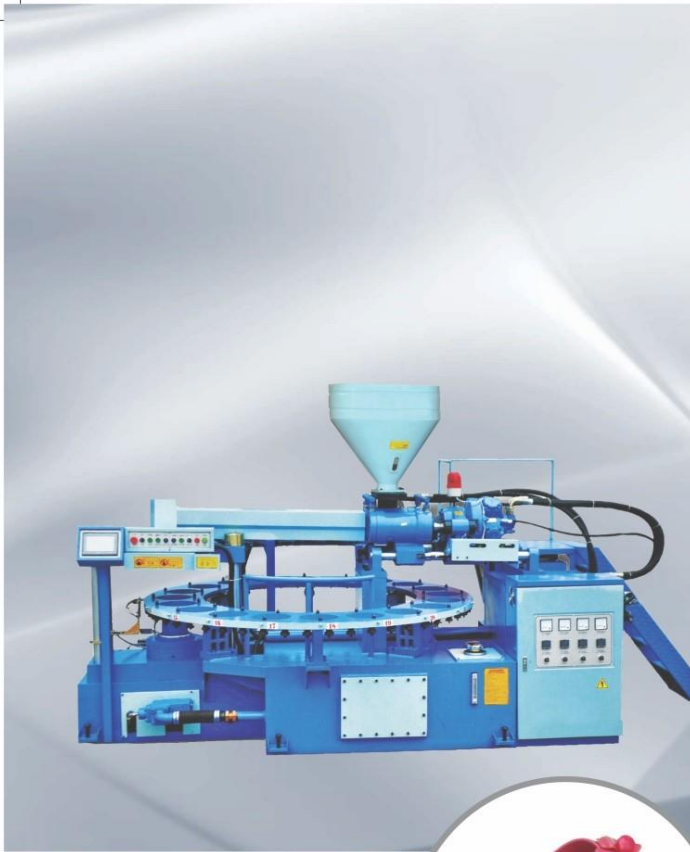
Fully Automatic Rotary Type Air Blowing Injection Moulding Machine **TECHROT 20**



- The machine can manufacture various types of plastic & air blown soles for slippers and sandals.
- PLC controlled.
- Easy to operate.
- The raw material can be recycled and the quality of the products is nearly equal to new material.
- After blowing and foaming, the product is light, soft and smooth faced with over 60% foamed rate.
- Integrated oil tank takes less space. Man machine interface is easy to operate.

Specification	Units	TechRot
Work Station	Station	20
Injecting Screw Diameter	Mm	60
Max. Injecting Capacity	Cm ³ /shot	660
Clamping Force	ton	45
Max. Injecting Pressure	Kg/Cm ²	890
Productivity Per Hour	Pair/h	130
Mould Dimension	Mm	480x320x300
Total Power	Kw	21
Machine Dimensions (LxWxH)	M	3.6x2.3x2.2
Machine Weight	Ton	4.5
Oil Capacity	L	420

Fully Automatic Rotary Type Air Blowing Injection Moulding Machine **TECHROT 24**



- The machine can manufacture various types of plastic & air blown soles for slippers and sandals.
- PLC controlled.
- Easy to operate.
- The raw material can be recycled and the quality of the products is nearly equal to new material.
- After blowing and foaming, the product is light, soft and smooth faced with over 60% foamed rate.
- Integrated oil tank takes less space. Man machine interface is easy to operate.

Specification	Units	TechRot
Work Station	Station	24
Injecting Screw Diameter	Mm	65
Max. Injecting Capacity	Cm ³ /shot	660
Clamping Force	ton	55
Max. Injecting Pressure	Kg/Cm ²	890
Productivity Per Hour	Pair/h	130
Mould Dimension	Mm	480x320x300
Total Power	Kw	31.5
Machine Dimensions (LxWxH)	M	4.29x4.7x2.175
Machine Weight	Ton	5.5
Oil Capacity	L	600

Shoe Last Moulding Machine TECHLAST



State-of-the-Art high production machines to manufacture shoe last.

- Innovative design for superior plasticizing and improved production capacity.
- PLC controlled.
- AC drives to set the screw speed according the different materials making the machine more efficient.



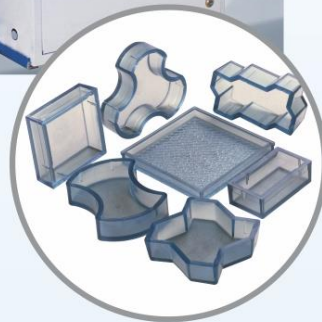
Specification	Units	TechLast
Max. Weight	Gms	8000
Output per hour	Kg	130
Hydraulic Pump Motor	Hp/Kw	10/7.46
Heating Capacity Power	Kw	35
Heating Zone	No.	5
Screw Diameter	Mm	120
Main Motor Electric Power	Hp/Kw	30/22.37
Oil Tank Capacity	L	210
PLC	PLC	SCHNEIDER
Total Power	Kw	57.5
Machine Dimensions (LxWxH)	Mm	4800x1600x1300
Machine Weight	Kg	5800



Paver & Tile Mould Moulding Machine TECHNICA-PV

State-of-the-Art high production extrusion moulding machines to manufacture PVC paver block and tile moulds.

- This machines uses extrusion injection system which delivers smooth and dent free moulds.
- PID temperature controllers with auto tuning facility used for barrel temperature settings providing faster response to temperature fluctuations which improve the product quality.
- This machine is easy to operate, quite economical and saves electricity consumption, manpower & space by upto 50% than conventional horizontal machine.



Specification	Units	Technica PV1	Technica PV2
Screw Dia	mm	70	70
Heating Load	kw	6	12
Electrical Motor	kw	16.78	28
Total Connected Load	Kw	22.78	40
Clamping Force	Ton	75	75
Production Capacity	Pair/Hour	20-40	40-80
Standard Mould Size	Mm	500x500	500x500
Net Weight	Kg	3500	5500
Machine Dimensions	MM	900(W)x3700(L)x2850(H)	1800(W)x3700(L)x2850(H)
Oil Capacity	LTR	300	420



Injection Moulding Machine: TECHNO



This premium quality injection moulding machine is ideal to process all kinds of plastic products. These moulding machines are available in various design, sizes and specifications and can be customised to suit individual needs. Our machines are equipped to provide you optimum plasticizing, delivering a high quality product.

- Ideal for PVC & TPR sheets.
- Standard Accessories:
 - PID Temperature Controller
 - Direct Hydraulic Screw Drive
 - Mechanical Ejector
- Optional Accessories:
 - Plc System
 - Servo systems
 - Proportional valves
 - Accumulator system for fast injection
 - Large gap between tie roads.
 - Hopper loader and driver
 - Hydraulic ejector

Specification	Units	Techno-DX	Techno-100	Techno-200	Techno-400	Techno-600
Screw Diameter	MM	65	38	45	52	57
Shot Weight	GMS	800	110	115	425	625
Injection Stroke	MM	250	150	175	230	280
Plasticizing Capacity	KG/HR	70	30	35	45	60
Injection Pressure	KG/CM2	1900	2050	2000	1900	1900
L/D Ratio	Ratio	20	18	18	18	18
Screw Revolution	RPM	0-140	0-250	0-225	0-220	0-210
Clamping Force	Tons	100	80	125	160	200
Clamping Stroke	MM	300	360	400	450	500
Min. Max Mould Th. Range	MM	50/200	150/350	200/380	200/400	225/450
Tie Rod Diameter	MM	65	75	75	90	100
Platen Dimension	Inch	26x28	20x24.5	22x26.5	24x30	28x33
Dist Between Tie Rod (HxW)	MM	530x660	300x400	350x450	360x510	450x570
Hydraulic Pump Motor	HP	15	10	20	25	25
Heating Capacity	HP	10	6.5	8.5	9.75	11
Total Load	HP/KW	25/19	16.5/13	28.5/22.5	34.75/27.5	36/28.5
Oil Reservoir Capacity	Ltrs.	400	400	500	600	700
Approx Floor (LxWxH)	Feet	12.5x3.5x6	15x6x6	17x6x7	19x6x8.5	20x6x8
Approx Weight	KG	4500	4200	6000	7000	8000

Ancillary machinery

We provide the best quality auxiliary products for plastic industry. Our product range includes Granulators, Hopper Driers, Screw Barrels & Chillers etc.

HOPPER DRIER

- All material contact surfaces are made from stainless steel to eliminate material contamination.
- The air dispersion device of the stainless steel net plate enables the heated air to evenly blow the material. This enables a uniform temperature in the barrel thereby, augmenting the flow and quality of the material.
- PID Temperature controller for accurate and precise temperature control.
- Double wall system / Glass wool insulated.
- Air blower is fitted with damper to control air flow.
- Split type construction for easy cleaning during material change.



GRANULATORS

- Claw and Paddle blade design can crush any hard or soft material with ease.
- Blades are made of special material. High chromium and heat treated.
- Blades are adjustable and can be re sharpened.
- The separation design of the crushing chamber and material bin allows the mesh screen to discharge and clean easily.
- Heavy oil sealed bearing provided for running of rotor.
- Easily movable.
- Sizes: 12"



SCREW BARRELS

- Nitro Alloy Steel
- Toughened, Tempered & Gas Nitrated

TECHNICAL SPECIFICATIONS

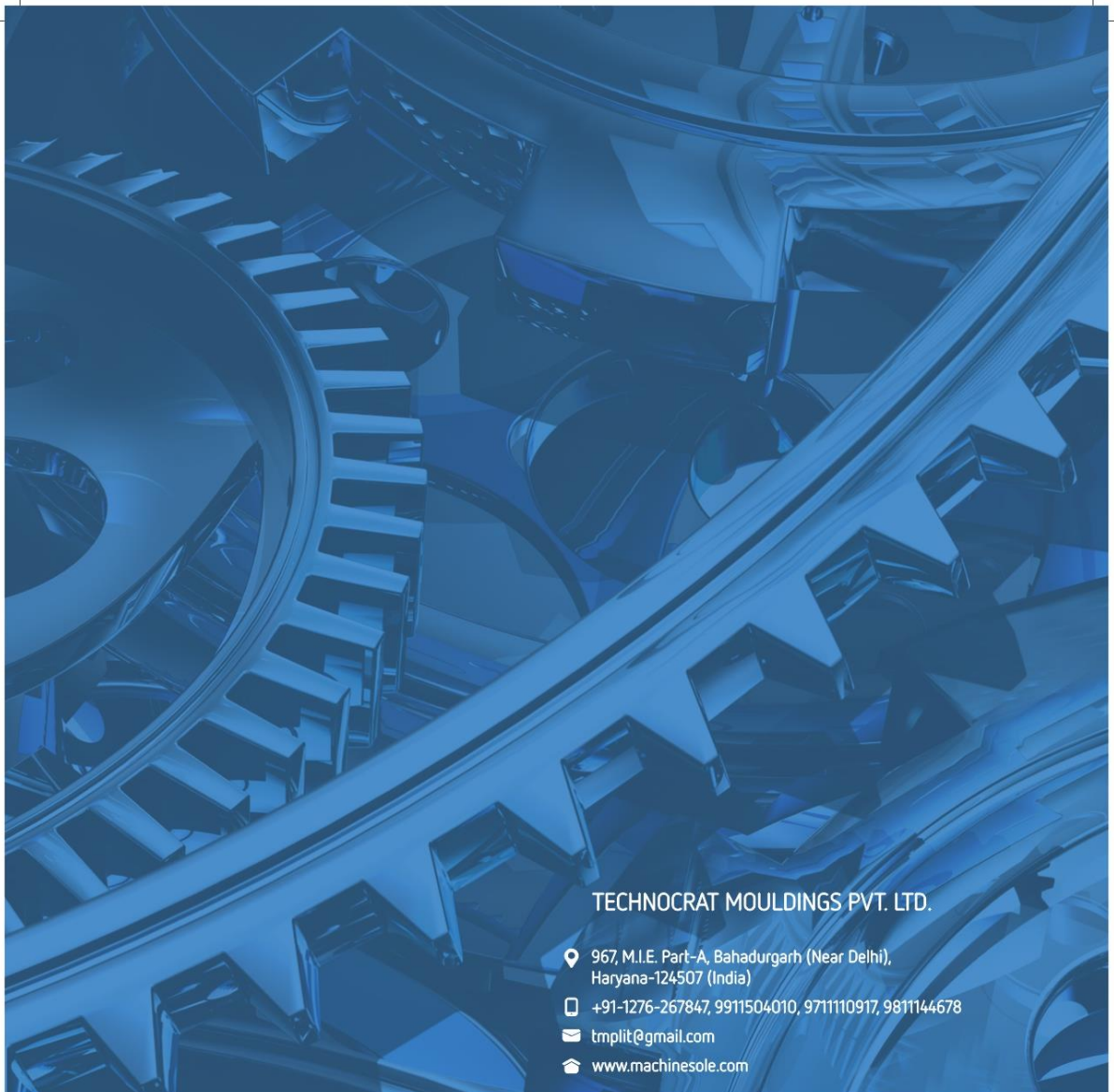
- Depth of Nitrated Layer : 0.5-1 mm
- Hardness of Nitration : 900-1020Hv, 58-68 HRC
- Fragility of Nitration : Less than grade 1
- Surface roughness : Ra 0.4 um
- Surface hardness of Nitrated Cr-coating Layer : =950 Hv
- Hardness of Cr-coating Layer : 0.05-0.1mm



CHILLERS

- Reliable and energy efficient reciprocating compressors of European origin.
- Environment friendly refrigerant R-404A/R-407C, available.
- Electronic expansion valves for larger capacities, for energy efficiency and precise temperature control
- Multiple refrigeration units including fluid pump and storage tank on skid.
- Monocoque skid design for extra ruggedness and reliability for mobile operation.
- Low FPI count and high condensing area with coated fins, for easier maintenance and longer life.
- Shell and tube type evaporators with high-flow design, ready to handle fluid debris and suspended particles.





TECHNOCRAT MOULDINGS PVT. LTD.

- 📍 967, M.I.E. Part-A, Bahadurgarh (Near Delhi), Haryana-124507 (India)
- ☎ +91-1276-267847, 9911504010, 9711110917, 9811144678
- ✉ tmplrit@gmail.com
- 🏠 www.machinesole.com



- 📍 Branch Office: Agra
2, Nagla Chuchana, Infront of D-36, Site-C,
UPSIDC Industrial Area, Sikandra, Agra
- ☎ +91 9927320365